

Simply WaterStop

Exterior Below-Grade Commercial Bentonite Waterproofing System

Description

Simply WaterStop is a multilayered bentonite-based waterstop for construction joints. The self-sealing properties of bentonite are encased within a hydration resistant core providing both extreme free swell properties as well as delayed swell properties. The multilayered structure with polypropylene fabric and strong tear-resistant netting provides for additional strength and structure. Simply WaterStop will provide superior performance over the life expectancy of the structure.

Uses

Simply WaterStop is used to seal static construction joints in concrete footings, walls, floors, tunnels, parking and plaza decks and to prevent water migration. Simply WaterStop has superior performance when used under conditions of extreme water head.

Installation

Examine all surfaces prior to starting application. Dust may be present; however all debris and standing water should be removed. Installation may proceed on uncured, damp or frozen surfaces. If surface is troweled smooth, lay a 1/8" to 1/4" bead of Simply Clay Mastic Adhesive along the joint. If surface is irregular, knock down protrusions greater than 1/2" and use Simply Mastic Adhesive to fill the voids. Press Simply Waterstop into the uncured adhesive and nail every 15" (38cm) o.c. with power-actuated or hand-driven concrete nails (1" or 2.54cm shank) with washer (5/8" - 13/16" or 15-23mm). Butt ends for a continuous application. For specific installation guidelines, please contact our distributor, a Simply Waterproofing Representative, or visit our website at www.simplywaterproofing.com for details.

Packaging

1/2" X 1" 15' or 3/4" X 1" x 15' standard rolls.

Storage

Protect from moisture. Store on skid or pallet, cover with polyethylene or tarp.

Availability

Available in Southern California through:
Simply Waterproofing Inc.
600 West Broadway, San Diego, CA 92101
info@simplywaterproofing.com
Phone: 619-560-7078
Contact us for details.

Limitations

Keep Simply WaterStop dry, protect from exposure to the elements. Simply WaterStop is resistant to many contaminants in soil. Please contact Simply Waterproofing, Inc. for compatibility testing. Simply WaterStop should be installed at least 2" from the face of the concrete.

Limited Warranty

Simply Waterproofing Products warrants its products will be delivered free of defects in materials and workmanship. Simply Waterproofing will replace the material or refund the purchase price. Simply Waterproofing makes no other warranty, including an implied warranty of merchantability or fitness for a particular purpose. Simply Waterproofing shall not be liable for any other loss or damage. Contact Simply Waterproofing to discuss specific details for extended warranty periods.

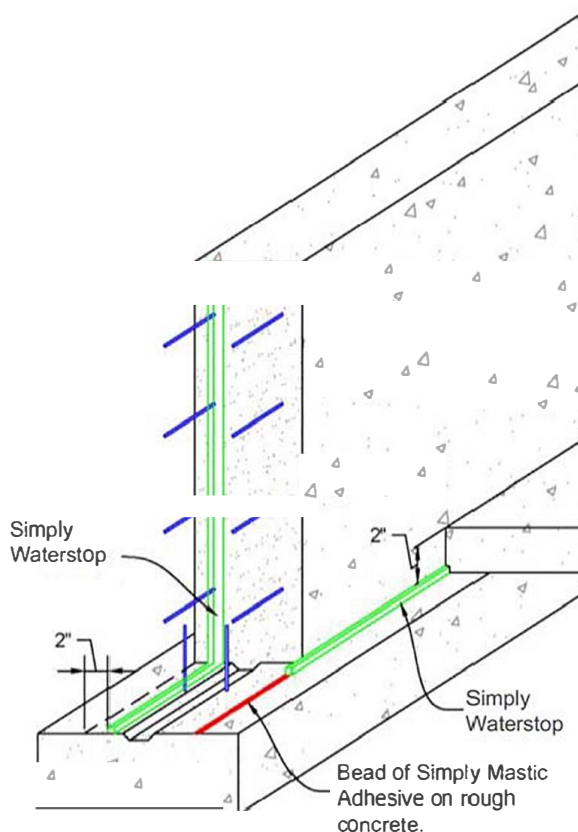
HEALTH AND SAFETY INFORMATION IS GIVEN IN THE SAFETY DATA SHEET (SDS) AND THE PRODUCT DATA SHEET AVAILABLE FOR THIS PRODUCT. THESE SHOULD BE READ AND UNDERSTOOD BEFORE USING THIS PRODUCT.

Simply WaterStop

Exterior Below-Grade Commercial Bentonite Waterproofing System

Simply WaterStop Typical Installation

Use Simply WaterStop on vertical and horizontal construction joints with 2" of containment. Simply Mastic Adhesive will fill voids in rough concrete and provides additional adhesion to the concrete while preventing water or concrete from seeping under the Simply WaterStop. See Figure below.



Simply WaterStop Typical Physical Properties

Property	Method	Results
Weight		0.25 lb per linear foot (0.4 ka/m)
Tear Strength: Membrane	ASTM D1004	1/2": 75 lbs (333 N) 3/4": 112 lbs (500 N)
% Elongation at break Unrestricted Expansion	ASTM D638	>150%*
Unrestricted Expansion		300% over 4 days
Installation Temperatures Freeze/thaw cycles	ASTM D746	1-15 °F to 120 °F (-25 °C to 50 °C) No effect before or after installation.
Resistance to hydrostatic head	ASTM D751 Procedure A	100 ft. (30 m) of water
Vapor Permeability	ASTM D5084	1 x 10 ⁻⁹ cm per sec