

Simply Blindside System

Below Grade Foundation Drainage & Waterproofing

Product Description

The Simply Blindside System is a pre-applied composite waterproofing membrane and drainage system installed on the shoring walls prior to the placement of the concrete foundation walls. The system combines the durability and chemical resistance of an HDPE membrane with the hydrostatic pressure reduction of a composite drainage mat.

Product Advantages

The system is mechanically bonded to the foundation walls when they are cast against the geometric shape of the dimpled HDPE liner which prevents water migration.

The system is unique to other pre-applied membrane systems with the control and sealing of vertical cracks in the foundation walls.

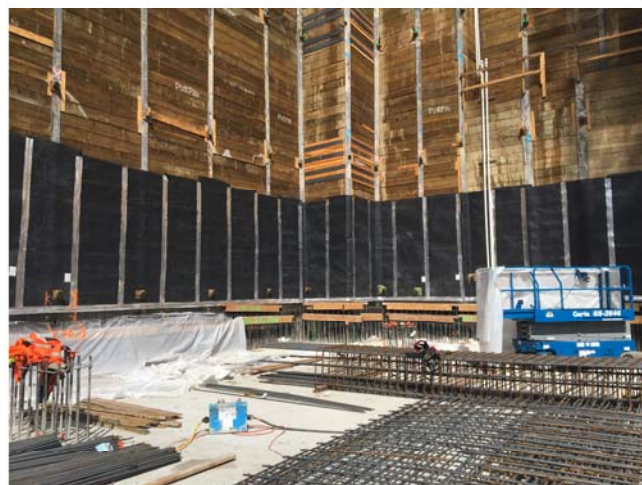
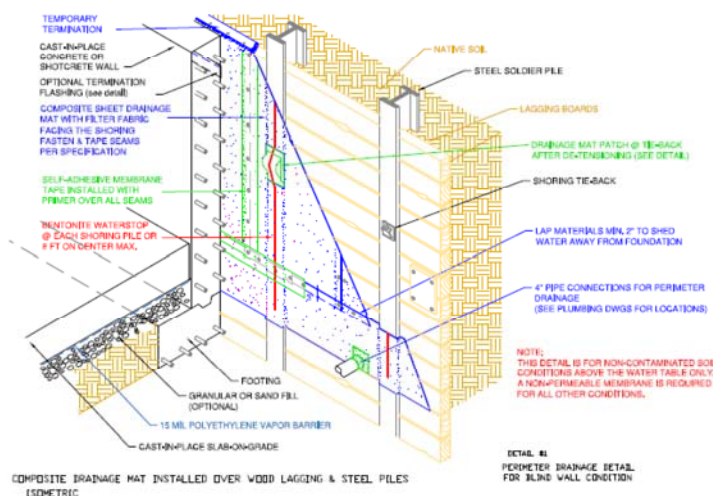
The system utilizes the HDPE liner of the drainage mat as the membrane whereby reducing the materials and reducing cost.

Applications

Blind wall constructed foundation and tunnel walls above the water table. For projects below the water table, the Simply Blindside System can be used in conjunction with the Simply-Clay membranes in the Simply Hybrid System that will achieve the same water-tight design more economically than other pre-applied membrane systems.

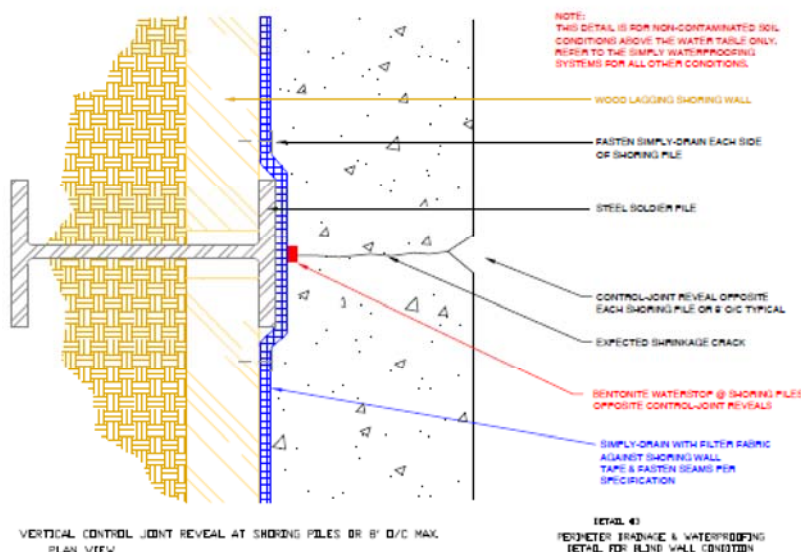
Simply Waterproofing products support sustainable and energy-efficient building practices, including efforts toward achieving LEED® certification (LEED® for New Construction & Major Renovations, LEED® for Core and Shell, LEED® for Existing Buildings and LEED® for Homes).

For Technical Support contact Simply Waterproofing via email at: info@simplywaterproofing.com or visit www.simplywaterproofing.com.



Simply Blindsided System

Below Grade Foundation Drainage & Waterproofing



SW Detail #003 Vertical Control Joint Reveal

To obtain the Simply Waterproofing 15-year Leak-Proof Warranty, vertical control joint reveals must be formed opposite the shoring piles and spaced at a distance not exceeding the height of the wall.

Simply Waterproofing products support sustainable and energy-efficient building practices, including efforts toward achieving LEED® certification (LEED® for New Construction & Major Renovations, LEED® for Core and Shell, LEED® for Existing Buildings and LEED® for Homes).

For Technical Support contact Simply Waterproofing via email at: info@simplywaterproofing.com or visit www.simplywaterproofing.com.

Technical Data

Product name	SIMPLY DRAIN	
Color	drainage-core: chocolate brown; geotextile: grey	
Material	drainage-core: recycled & virgin high-density polyethylene geotextile: polypropylene	
Dimple height	5/16" (8 mm)	ASTM D6364-06
Compressive strength	approx. 5,200 psf (250 kN/m ²)	ASTM D6364-06
Air-gap volume between dimples	0.13 gal/ft ² (5.3 l/m ²)	DIN 4102
Water penetration resistance (core)	> 120 psi (815 kPa) Watertight	AATCC 127-1995
Flow rate / unit width @ hydr. grad. 1.0; 180 kPa	5.2 gal/min/ft (65 l/min/m)	ASTM D4716-08
Flow rate / unit width @ hydr. grad. 0.1; 180 kPa	1.4 gal/min/ft (17.4 l/min/m)	ASTM D4716-08
Temperature range	-22°F to +176°F (-30°C to +80°C)	
Chemical properties	Excellent chemical resistance, resistant to root-penetration, rot-proof	
Toxicity	non-toxic, non-polluting	
Weight per unit area	approx. 21 oz/yd ² (715 g/m ²)	ASTM D5261-92
Roll dimensions / weight	6' x 65' 7" (1.83 m x 20 m) 60 lbs (27.2 kg) 8' x 65' 7" (2.45 m x 20 m) 73 lbs (33.1 kg)	
Installation depth	up to 12' (4 m)	
Service life expectancy	> 25 years (at pH between 4 and 9 and temperature below 77°F / 25°C). Do not expose to UV light for more than 30 days.	
Accessories	SIMPLY-TERM BARS SIMPLY-SEAM TAPE SIMPLY-FLEX TAPE SIMPLY-FASTENERS SIMPLY-SEALANT SIMPLY-WATERSTOP	