

Simply Drain

Below Grade Foundations Drainage & Waterproofing

MATERIAL

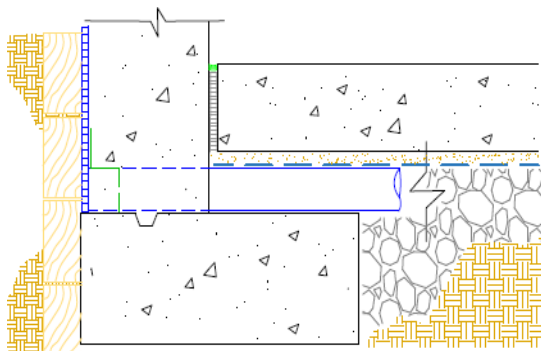
A dimpled membrane made of special high-density polyethylene (HDPE) and polypropylene (PP) non-woven TYPAR® geotextile. The HDPE drainage core with a specially designed dimple pattern provides high compressive strength and drainage capacity. SIMPLY DRAIN is manufactured with an exclusive co-extrusion process, utilizing 60% recycled HDPE from municipal recycling programs in the middle, and two thin layers of a special virgin HDPE on the outside. The encapsulation of the recycled HDPE ensures that SIMPLY DRAIN is protected against degradation caused by oxidation and environmental influences, like acidic soils or alkalinity (concrete). SIMPLY DRAIN provides high compressive strength, impact resistance, and chemical and environmental stress crack resistance.

PROPERTIES

The product is comprised of a 2-layer geocomposite. The first layer is the high-density polyethylene drainage core that drains incoming water freely to the footing perimeter drain, thus preventing the build-up of hydrostatic pressure against the waterproofing layer. It also acts as a highly effective protection layer for the waterproofing material during backfill operations. The second layer is a heatbonded PP geotextile. The rot-proof geotextile is highly water permeable and prevents clogging of the flow passages in the drainage core.

APPLICATION

SIMPLY DRAIN is unrolled against the shoring or foundation wall. It may also be used in conjunction with liquid or sheet applied waterproofing. Install the top edge of drain board at grade level. Place the bottom edge close to the perimeter footing drain. Accessories are available for easy fastening and termination details.



Technical Data

Product name	SIMPLY DRAIN	
Color	drainage-core: chocolate brown; geotextile: grey	
Material	drainage-core: recycled & virgin high-density polyethylene geotextile: polypropylene	
Dimple height	5/16" (8 mm)	ASTM D6364-06
Compressive strength	approx. 5,200 psf (250 kN/m ²)	ASTM D6364-06
Air-gap volume between dimples	0.13 gal/ft ² (5.3 l/m ²)	DIN 4102
Water penetration resistance (core)	> 120 psi (815 kPa) Watertight	AATCC 127-1995
Flow rate / unit width @ hydr. grad. 1.0; 180 kPa	5.2 gal/min/ft (65 l/min/m)	ASTM D4716-08
Flow rate / unit width @ hydr. grad. 0.1; 180 kPa	1.4 gal/min/ft (17.4 l/min/m)	ASTM D4716-08
Temperature range	-22°F to +176°F (-30°C to +80°C)	
Chemical properties	Excellent chemical resistance, resistant to root-penetration, rot-proof	
Toxicity	non-toxic, non-polluting	
Weight per unit area	approx. 21 oz/yd ² (715 g/m ²)	ASTM D5261-92
Roll dimensions / weight	6' x 65' 7" (1.83 m x 20 m) 60 lbs (27.2 kg)	
	8' x 65' 7" (2.45m x 20m) 73 lbs (33.1 kg)	
Installation depth	up to 12' (4 m)	
Service life expectancy	> 25 years (at pH between 4 and 9 and temperature below 77°F / 25°C). Do not expose to UV light for more than 30 days.	
Accessories	SIMPLY-TERM BARS SIMPLY-FLEESE TAPE SIMPLY-FLEX TAPE SIMPLY-FASTENERS SIMPLY-SEALANT	

SIMPLY WATERPROOFING products support sustainable and energy-efficient building practices, including efforts toward achieving LEED® certification (LEED® for New Construction & Major Renovations, LEED® for Core and Shell, LEED® for Existing Buildings and LEED® for Homes).

For Technical Support contact Simply Waterproofing via email at: info@simplywaterproofing.com or visit www.simplywaterproofing.com.

CCMC # 13209 Foundation Drainage Layer