

SimplyClay TieBack Cover

Exterior Below-Grade Commercial Bentonite Waterproofing System

Description

The SIMPLY-CLAY Tieback Cover is a waterproof assembly made from SIMPLY-CLAY 1500, a 20-mil HDPE sheet with bentonite on both sides. The two-piece assembly (cone-shaped cover and a collar) is filled with SIMPLY-CLAY Mastic to completely encompass the Tieback bolt. The Tieback Cover is pre-assembled to provide a simple and quick waterproofing detail. The cone shape, flange collar, and mastic fill combine to form a secure waterproof cover that is strong enough to withstand shotcrete or poured concrete, yet simple enough for custom sizes. The SIMPLY-CLAY Tieback Cover is designed for use with SIMPLY-CLAY's 1000 and SIMPLY-CLAY's 1500 waterproofing systems.

Uses

The SIMPLY-CLAY Tieback Cover can be installed over cable and rod type heads. After the tieback is coated and the Cover is filled with SIMPLY-CLAY Mastic, the Cover is centered over the tieback and then mechanically fastened to the soil retention system. The Tieback Cover provides extra waterproofing in these difficult and leak prone areas. It has outstanding performance when used under conditions of high water head.

Installation

Examine all surfaces prior to starting application. Remove all debris and standing water--dust may be present. Installation may proceed on damp or frozen surfaces. Thoroughly coat the tie back penetrations and fill the SIMPLY-CLAY Tieback Cover with SIMPLY-CLAY Mastic. Install the Tieback Cover and fasten the flanges with appropriate fasteners. Spread additional Mastic at corners of the Cover use CureTite Mastic Adhesive and fasteners to tie in waterproofing membrane. The SIMPLY-CLAY Tieback Cover does not require an additional protection course for most applications. Alternate sizes are available. For specific installation guidelines, please contact our distributor, a Simply Waterproofing Representative, or visit our website at www.SimplyWaterproofing.com for details.

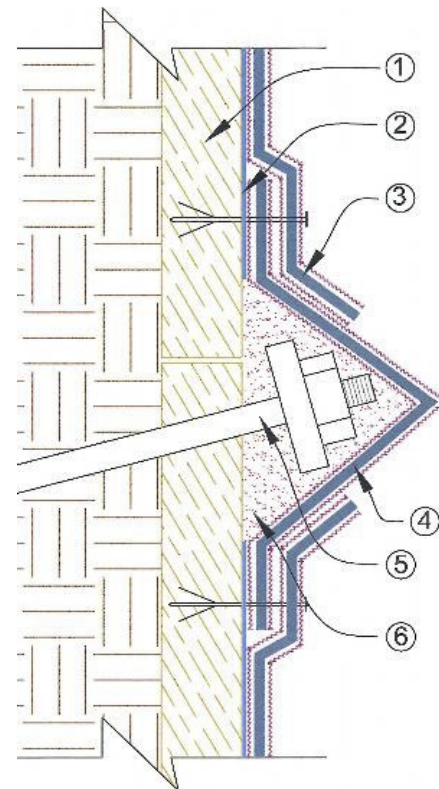


Figure 1. SIMPLY-CLAY Tieback Cover 1). Wood lagging with soldier pile removed for clarity 2). Drainage layer/20-mil HDPE 3). SIMPLY-CLAY waterproofing membrane 4). Tieback cover 5). Tieback rod. 6). SIMPLY-CLAY Mastic 7). SIMPLY-CLAY Mastic Adhesive at the seams.

SimplyClay TieBack Cover

Exterior Below-Grade Commercial Bentonite Waterproofing System

Packaging

Standard size for the SIMPLY-CLAY Tieback Cover structure is 27" x 27" x 8" and holds approximately 2 gallons of Mastic. Custom-sized covers are available by SPECIAL ORDER.

Storage

Protect from moisture. Store in original shipping container on skid or pallet, cover with polyethylene or tarp.

Availability

Available internationally and nationally through Simply Waterproofing distributors. Contact us for details.

Limitations

SIMPLY-CLAY Tieback Cover must be confined by a minimum of 24 psf. Keep Tieback Cover dry, protect from exposure to the elements. If conditions of salt or contaminants exist please contact Simply Waterproofing for compatibility testing.

Limited Warranty

Simply Waterproofing Products warrants its products will be delivered free of defects in materials and workmanship. Simply Waterproofing will replace the material or refund the purchase price. Simply Waterproofing makes no other warranty, including an implied warranty of merchantability or fitness for a particular purpose. Simply Waterproofing shall not be liable for any other loss or damage. Contact Simply Waterproofing to discuss specific details for extended warranty periods.

SIMPLY WATERPROOFING products support sustainable and energy-efficient building practices, including efforts toward achieving LEED® certification (LEED® for New Construction & Major Renovations, LEED® for Core and Shell, LEED® for Existing Buildings and LEED® for Homes).

For Technical Support contact Simply Waterproofing via email at: info@simplywaterproofing.com or visit www.simplywaterproofing.com.

Simply-Clay TieBack Cover Typical Physical Properties		
Property	Method	Results
SIMPLY-CLAY Membrane		20-mil virgin resin HDPE laminated with bentonite and fabric on both sides
Weight		1.5 lb per sq foot (7,34 kg/m ²) 172
Puncture Resistance	ASTM E154-88	lbs. (77.5 kg)
Tensile Strength: Membrane %	ASTM D638	MD: 3750 psi (25.9 MPa) TD: 3780 psi (26.1 MPa)
Elongation at break:	D638 Type 4 Dumbell ASTM	>567%
Resistance to hydrostatic head	D751 Procedure A ASTM	169 ft. (51.5 m) of water
Water Vapor Permeability:	E96-80	0.39 x 10 ⁻¹³ cm/sec 0.61 ng/ m ² .s.Pa 0.024 Perms (grains/ft ² * hr * inHg)
Resistance to microorganisms: (Bacteria, fungi, mold, yeast)	ASTM E154-88 Section 13	Unaffected
Installation Temperatures Life	ASTM D746, ASTM D1238	-40°F to 150°F (-40°C to 65.5°C)
Expectancy:		Both high-density polyethylene and bentonite have life expectancy measurable in hundreds-of-years

HEALTH AND SAFETY INFORMATION IS GIVEN IN THE SAFETY DATA SHEET (SDS) AND THE PRODUCT DATA SHEET AVAILABLE FOR THIS PRODUCT. THESE SHOULD BE READ AND UNDERSTOOD BEFORE USING THIS PRODUCT.