

## Simply Clay System

### *Below Grade Foundation Waterproofing*

#### Product Description

The Simply Clay System is a pre-applied composite waterproofing membrane system recommended for projects that extend below the water table. The membrane is installed on the shoring walls and bottom of the excavation prior to the placement of the concrete slab and foundation walls. The system combines the durability and chemical resistance of an HDPE membrane with the expanding and sealing properties of granular bentonite.

#### Product Advantages

The sealed seams of the HDPE liner provide a continuous water and gas-proof membrane while the bentonite provides secondary waterproofing in the event of a membrane breach. The bentonite clay reacts during placement of the concrete sealing the surface and bonding the membrane to the foundation.

The Simply Waterproofing Systems are unique to other pre-applied membrane systems with the control and sealing of the vertical cracks in the foundation walls making them superior to any other system on the market today.

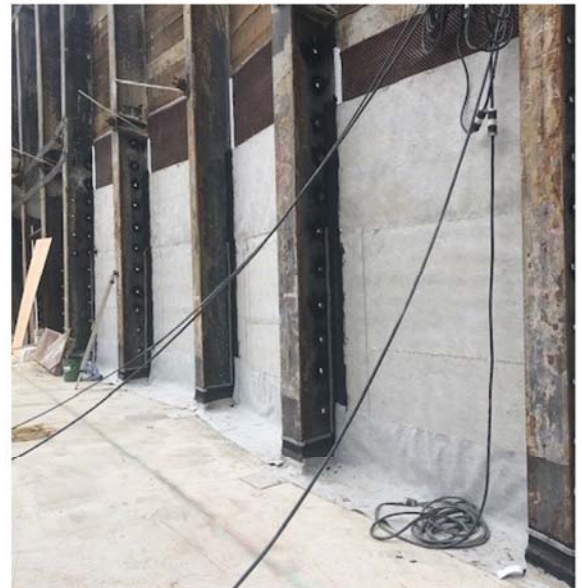
The system requires vertical control joint reveals be cast into the foundation walls at 8' on center maximum spacing to obtain the full 15-year leak-proof warranty.

#### Applications

Blind-wall constructed foundation and tunnel walls below the water table. For projects above the water table, the **Simply Blindside System** or the **Simply Hybrid System** can be used that will achieve the same water-tight design more economically than other pre-applied membrane systems.

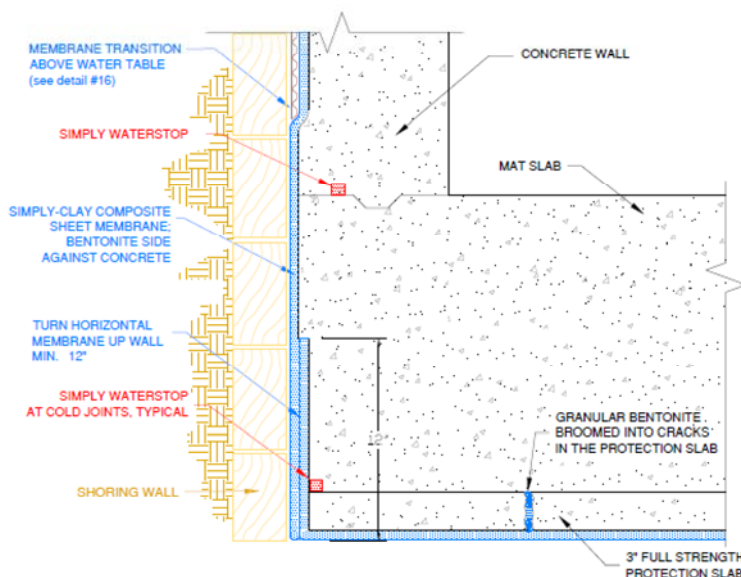
Simply Waterproofing products support sustainable and energy-efficient building practices, including efforts toward achieving LEED® certification (LEED® for New Construction & Major Renovations, LEED® for Core and Shell, LEED® for Existing Buildings and LEED® for Homes).

For Technical Support contact Simply Waterproofing via email at: [info@simplywaterproofing.com](mailto:info@simplywaterproofing.com) or visit [www.simplywaterproofing.com](http://www.simplywaterproofing.com).



## Simply Clay System

### Below Grade Foundation Waterproofing



#### SW Detail # 017 Wall Base at Mat Slab

To obtain the Simply Waterproofing 15-year Leak-Proof Warranty, vertical control joint reveals must be formed opposite the shoring piles and spaced at a distance not exceeding the height of the wall.

Simply Waterproofing products support sustainable and energy-efficient building practices, including efforts toward achieving LEED® certification (LEED® for New Construction & Major Renovations, LEED® for Core and Shell, LEED® for Existing Buildings and LEED® for Homes).

For Technical Support contact Simply Waterproofing via email at: [info@simplywaterproofing.com](mailto:info@simplywaterproofing.com) or visit [www.simplywaterproofing.com](http://www.simplywaterproofing.com).

### Simply Clay 1000 Typical Physical Properties

Property	Method	Results
Thickness	--	.16"
Membrane		Green 20-mil virgin resin HDPE
Bentonite		Sodium Montmorillonite
Weight		1 lb per sq foot (4.89 kg/m <sup>2</sup> )
Puncture Resistance	ASTM-E-154-88 Section 10	170 LBS (77.3 kg)
Tensile Strength: Membrane	ASTM D638	MD: 3660 psi (25.2 MPa) TD: 3650 psi (25.2 MPa)
% Elongation at break	ASTM D638 Type 1 dogbone	>700%
Crack Bridging		3/8" (0.95 cm) crack
Resistance to hydrostatic head	ASTM D751 Procedure A	174 ft. (52.9 m) of water
Water Vapor Permeability:	ASTM E96-80	0.53 x 10 <sup>-13</sup> cm/sec 0.84 ng/ m <sup>2</sup> .s.Pa 0.033 Perms (grains/ft <sup>2</sup> .hr • inHg)
Resistance to micro-organisms: (bacteria, fungi, mold, yeast)	ASTM E154-88 Section 13	Unaffected
Toxicity:		Low. Do not ingest
Staining:		No known incompatibilities
Chemical Resistance:		Extremely high resistance to chemicals & gases. Contact manufacturer for specific information.
Freeze/thaw stability		No effect before or after installation.
Installation Temperatures	ASTM D746, ASTM D1238	-40°F to 150°F (-40°C to 65.5°C)
Life Expectancy		Both high-density polyethylene and bentonite have life expectancy measurable in thousands-of-years.